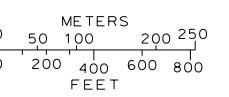
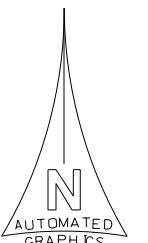


C-184
C-185
C-186
C-187

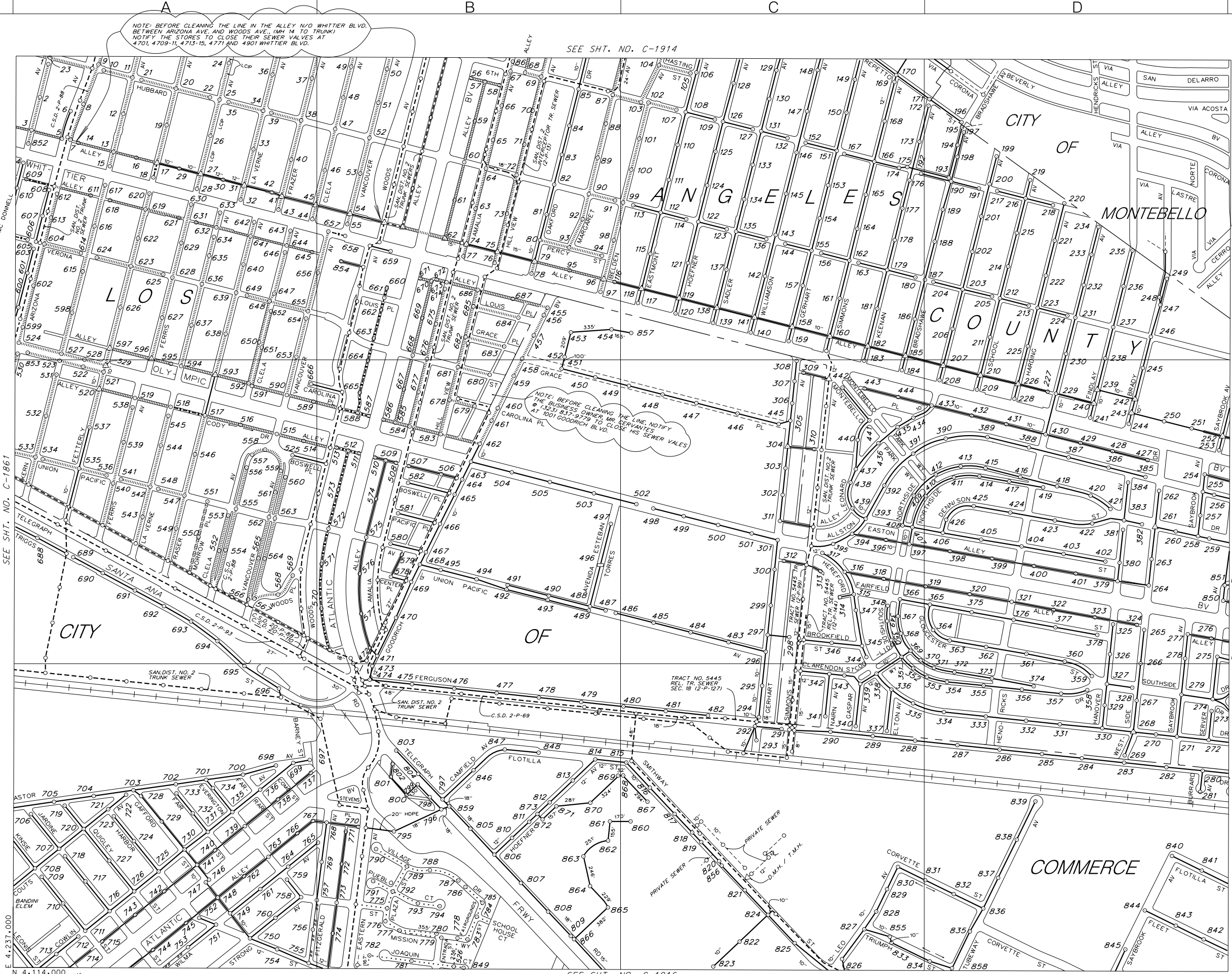
THIS MAP IS INTENDED FOR USE ONLY AS OPERATIONS MAP BY LOS ANGELES COUNTY SEWER MAINTENANCE DISTRICTS. LOS ANGELES COUNTY EXPRESSLY DISCLAIMS ANY LIABILITY FOR ANY INACCURACIES WHICH MAY BE PRESENT IN THIS MAP.



LEGEND

- CLAY SEWERS MAINTAINED BY SMD, 8" UNLESS OTHERWISE NOTED
- PLASTIC SEWERS
- CONCRETE SEWERS
- CLAY SEWERS, LINED
- CEMENT SEWERS, LINED
- FORCE MANS
- - - SEWERS NOT MAINTAINED BY SMD
- TRUNK SEWERS
- - - CITY BOUNDARY
- STANDARD MANHOLE
- △ DROP MANHOLE
- SHALLOW MANHOLE
- ◇ TRAP MANHOLE
- ⊕ WEIR MANHOLE
- C.O. CLEANOUT
- L.H. LAMP HOLE
- PUMP STATION
- LCIP LINED CAST IRON PIPE

TOTAL MH'S THIS MAP: 859



NOTE: BEFORE CLEANING THE LINE IN THE ALLEY N/O WHITTIER BLVD. BETWEEN ARIZONA AVE AND WOODS AVE. (44 14 TO TRUNK) NOTIFY THE STORES TO CLOSE THEIR SEWER VALVES AT 4701, 4709-11, 4713-15, 4771 AND 4901 WHITTIER BLVD.

SEE SHT. NO. C-1914

NOTE: BEFORE CLEANING THE LINE NOTIFY THE BUSINESS OWNER MR. PERVANTES AT 701 GODDARD BLVD. TO CLOSE HIS SEWER VALVES

SEE SHT. NO. C-1861

SEE SHT. NO. C-1969

SEE SHT. NO. C-1916

MAP REV.

C-1915

MAP REV
01-24-23
DATA BASE REV
09-15-98

CONSOLIDATED S.M.D.

C-1915

T:675:H-1

1123-1123.1915