

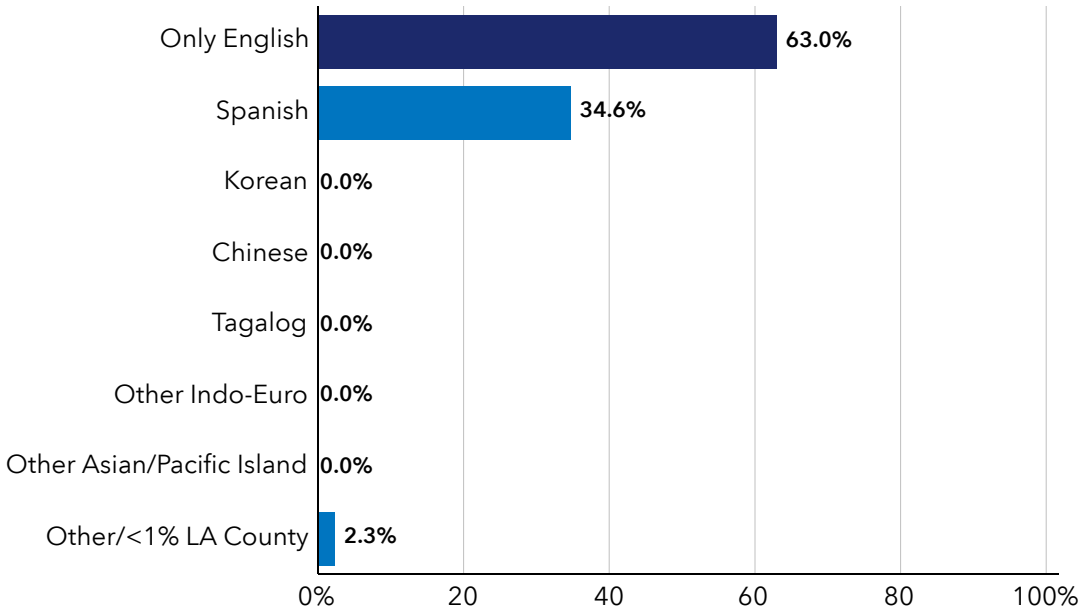
# COMMUNITY PROFILE

## Unincorporated - Hi Vista (SD: 5)

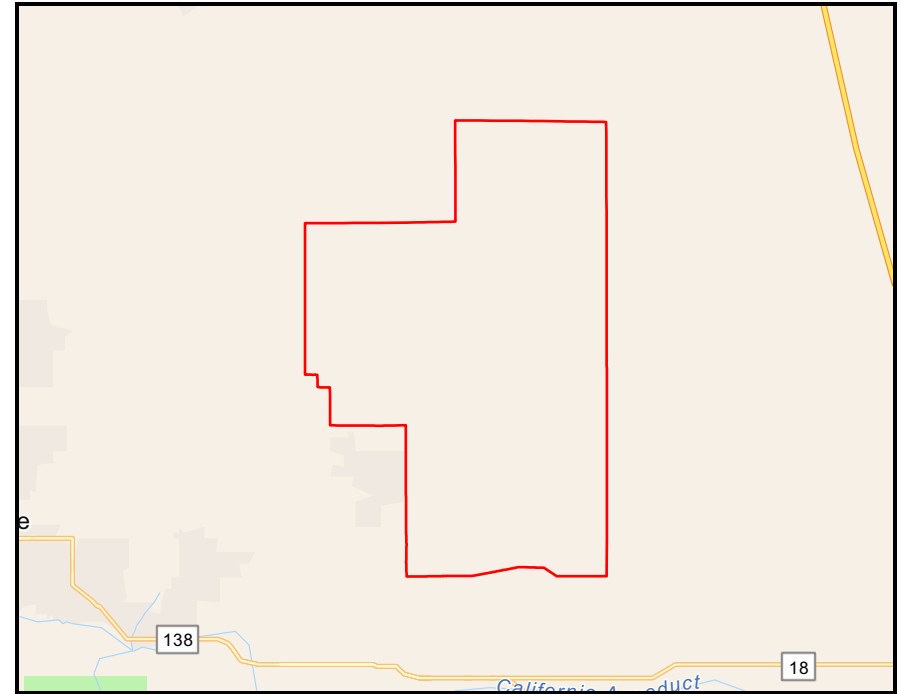
October 2024

### % LANGUAGE SPOKEN AT HOME

(ACS, 2024)



Only identifying languages >1% for all of LA County.



Source: Countywide Statistical Areas (2023). See [documentation](#) for details.

**170.14**

Area (SqMi)  
(LA County eGIS, 2024)

**782**

Total Population  
(ACS 5-Yr, 2022)

**5**

Population Density  
(per Square Mile)  
(Esri, 2024)

**262**

Total Households  
(ACS 5-Yr, 2022)

**2.75**

Avg Size Household  
(Esri, 2024)

**\$46,775**

Median Household  
Income  
(ACS 5-Yr, 2022)

**25%**

Pop w/Income Below  
Poverty Level  
(ACS 5-Yr, 2022)

**8%**

Unemployed  
Population Age 16+  
(Esri, 2024)

**45.4**

Median Age  
(Esri, 2024)

**32%**

% HH with 1+  
Persons with a  
Disability  
(ACS 5-Yr, 2022)

**84.0**

2023 Diversity Index  
(Esri, 2024)  
(0 - No Diversity;  
100 = Very Diverse)

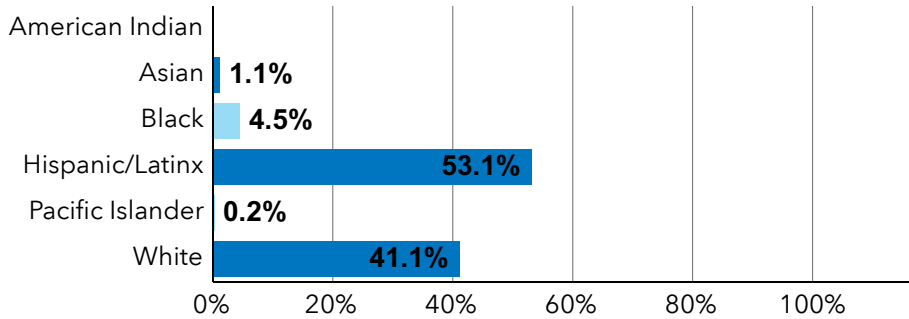
**87**

Total Crime Index  
(Esri, 2024)  
(>100 = Above avg.  
risk compared to rest  
of US)

Read how US Census defines [poverty](#).

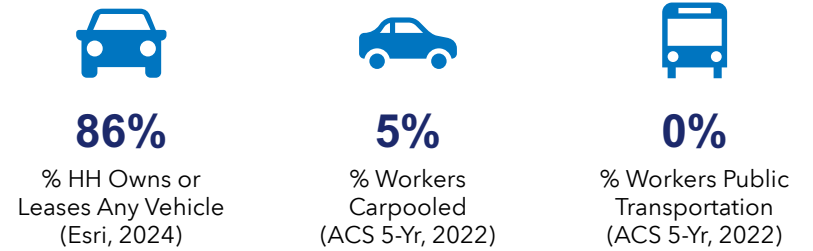
Click here to learn more about Esri's [Diversity Index](#) and [Crime Index](#).

## POPULATION BY RACE/ETHNICITY

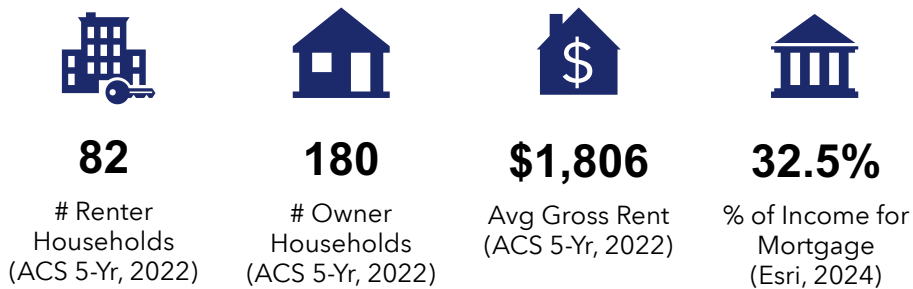


Source: LA County eGIS/Urban Research, 2023 estimates

## TRANSPORTATION



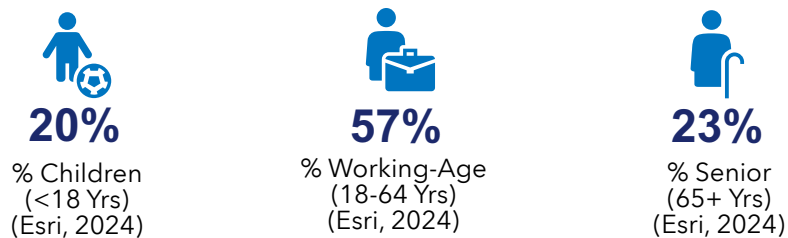
## HOUSING



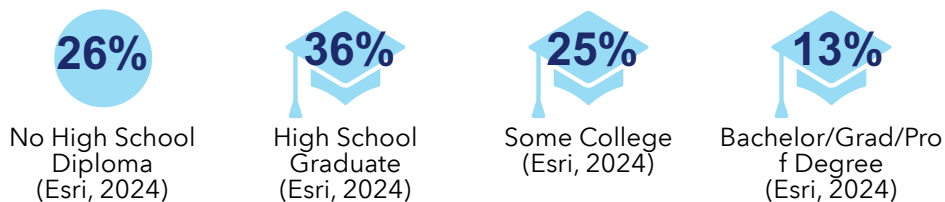
## POPULATION AND BUSINESSES



## AGE

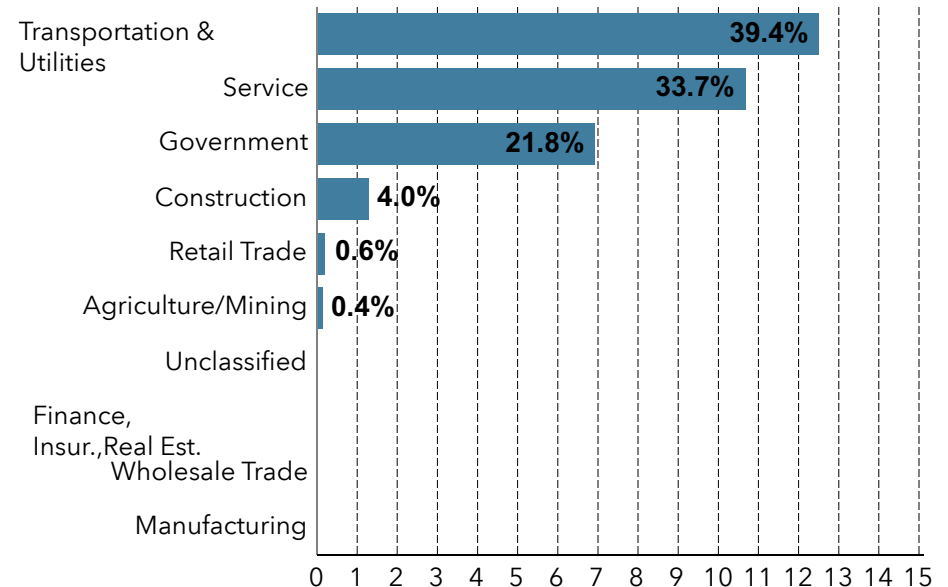


## EDUCATIONAL ATTAINMENT (Age 25+)

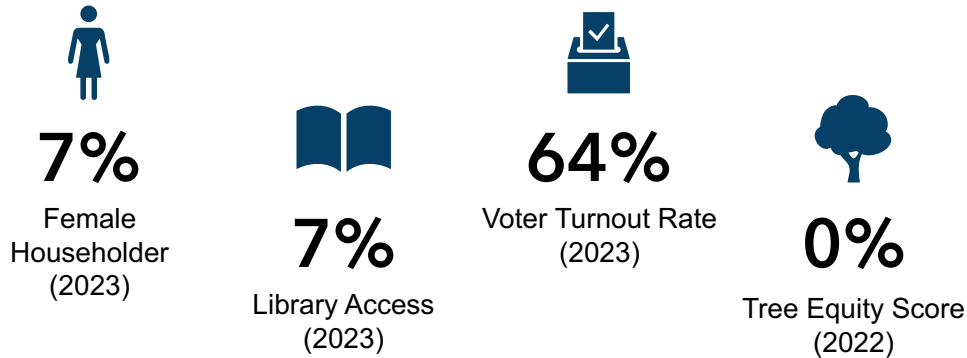


## EMPLOYMENT BY SECTOR

(Esri, 2024)

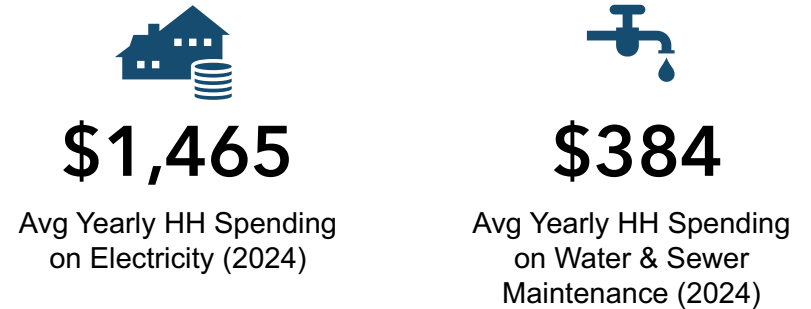


### COMMUNITY FACTORS



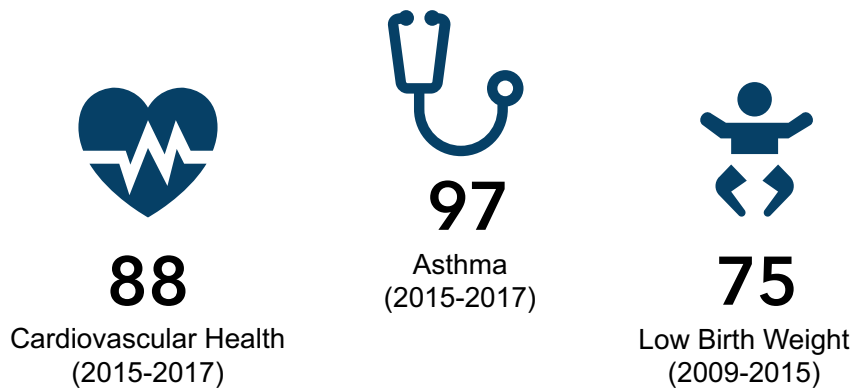
Sources: [Climate Vulnerability Index](#); [Tree Equity Score](#)

### UTILITIES



Source: [ESRI Business](#)

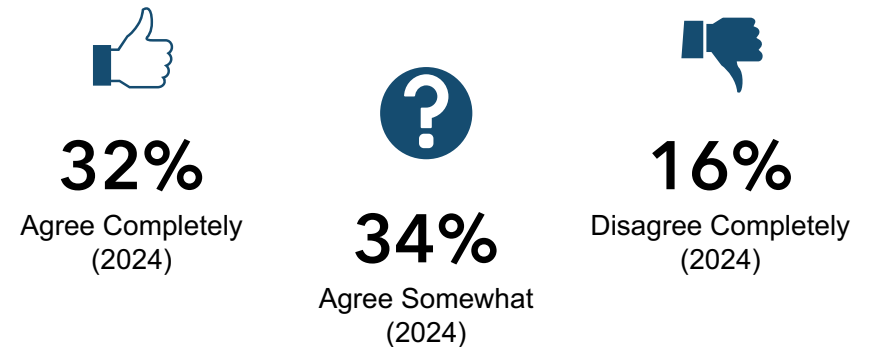
### HEALTH FACTORS



Percentile values range from 0 - 100 (Low to high)  
50 = average compared to rest of California

Source: [CalEnviroScreen](#)

### CLIMATE CHANGE IS A SERIOUS THREAT



Source: [ESRI Business](#)

# CLIMATE VULNERABILITY ASSESSMENT

## Levels of Risk by Hazard



Extreme Heat  
(2021)

**Medium**



Wildfire  
(2021)

**Low**



Drought  
(2021)

**High**



Coastal Flooding  
(2021)

**Low**



Inland Flooding & Extreme Heat  
(2021)

**Low**

Source: [LA County Climate Vulnerability Assessment](#)

# TRAFFIC COLLISIONS



**17**

Total Collisions  
(2023)



**1**

Fatal Collisions  
(2023)

Source: [Transportation Injury Mapping System](#)

# HOMELESSNESS



**219**

Unsheltered Homeless Population  
(2022)

Source: [Los Angeles Service Homeless Authority](#)

# DIGITAL DIVIDE



**96%**

Have Internet Access at Home  
(2024)



**93%**

Broadband or High Speed  
Connectivity at Home  
(2024)

Source: [ESRI Business](#)